

WOODBIDGE CLUB

APRIL 2025

MON

TUES

WED

THURS

FRI

BEFORE SCHOOL HOURS
6:30AM - 8:30AM
AFTER SCHOOL HOURS
3:00PM - 6:00PM
KINDERGARTEN - GRADE 6

CLUB CLOSED: APRIL 18TH & 21ST
EARLY DISMISSAL: APR 2ND

FEE PER MONTH:

BEFORE OR AFTER SCHOOL CARE: \$200
BEFORE AND AFTER SCHOOL CARE: \$350
FEES ARE DUE BY THE 15TH OF THE MONTH

PROGRAMS ARE CREATED TO LEARN,
EXPLORE, AND GIVE OPPORTUNITY.
HOMEWORK HELP IS AVAILABLE DURING
AFTER SCHOOL HOURS. FOR QUESTIONS
ABOUT PROGRAMS, PLEASE CONTACT
TAYLOR SCHIEWE, CLUB COORDINATOR

1127 PARKER DRIVE
SHERWOOD PARK, AB T8A 4E5
WOODBIDGE CLUB COORDINATOR:
TAYLOR SCHIEWE
780-719-1514 | 780-416-1500
WOODBIDGECLUB@SCBGC.COM

VOLUNTEER WEEK IS APRIL 27TH-MAY
3RD THIS YEAR! THANKS ALL VOLUNTEERS
IN ASSISTING OUR PROGRAMS!!

FOR ALL AFTERNOON
ABSENCES PLEASE EMAIL
ABSENCES@SCBGC.COM

PLAY LIKE THE PROS LEAGUE GAMES
ARE BACK!! CHECK OUT WHICH CLUB
YOUR PLAYER WILL BE TRAVELLING TO!



DIY Day - Sun
Catchers



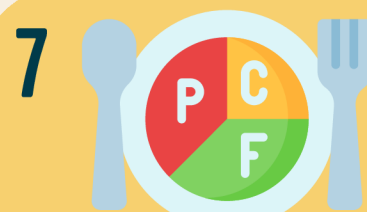
2 Early Dismissal
Autism Awareness
Day



3 Outdoor Adventures -
Nature Bingo



4 Flinch & Bounce
1 Ball Group Games



7 Food Power
Chart



8 Discovery Day -
Index Card
Scaffolding



9 Play Like the Pros



10 Outdoor Adventures -
Puddle Boats



11 Human Foosball



14 Indigenous Knowledge
Love Eagles



15 DIY Day -
Balloon Painting



16 Play Like the Pros



17 Outdoor Adventures -
Sun Clock

18 CLUBS
CLOSED
EASTER WEEKEND

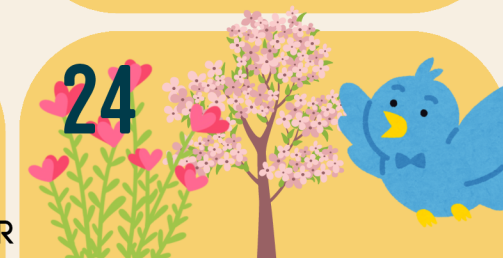
21 CLUBS
CLOSED
EASTER WEEKEND



22 Earth Day



23 HOME GAME VS HOLY REDEEMER



24 Outdoor Adventures -
Signs of Spring



25 Animal Muk &
Monkey Dance
Inuit Games



28 Around the World
Italy



29 Discovery Day -
Football Catapults



30 Play Like the Pros



bgc Strathcona
County